

Rising stars

AND THE WINNER IS...?

All will be revealed on 24 January when one of three rising stars of the student world will be crowned SGD Student Designer of the Year 2013

THE SGD STUDENT design competition 2013 brought together a judging panel including Tom Stuart-Smith MSGD, Sarah Eberle MSGD and Arabella St. John Parker from awards media partner *Homes & Gardens* magazine.

The panel selected three finalists: Matt Cairns from Greenwich University, Nick Morton from the London College of Garden Design and the 2012 SGD Student Award winner Jon Sims, also of the London College of Garden Design.

The three designers were felt to have the most consistent, methodical and cogent presentations of all the entries and the judges commented that all three "showed an ability to handle scale, understand space and achieve the brief in a clear and concise way".

There were no limits to the type or number of entries students could enter in the award. The judges were looking for outstanding design skills and importantly a clear demonstration of an understanding of the brief provided for the project. This year, the competition was open to SGD student members as well as those who had progressed from a student member to a pre-registered member between 18 May 2012 and 12 August 2013.

MATT CAIRNS

Matt developed his design for the Masterplan and Design Development to Calverley Grounds, an existing public space in Tunbridge Wells, as his final year project for his honours degree in Landscape Architecture at Greenwich.

Matt says: "The park, described by some as a hidden gem, could also be



described as a lost landscape or lost opportunity. The challenge was to design a park that would work as a coherent series of spaces, and as one complete destination space, attracting people to spend time in the park."

NICK MORTON

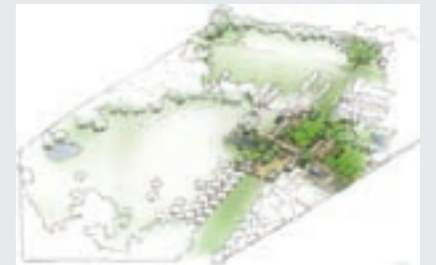
London-based Nick's site is a farmhouse in the Cotswolds, near Malmesbury. The property comprises 15 acres including various outbuildings, and the clients – an architect and an artist – are in the process of converting

ABOVE Matt Cairns' Masterplan and Design Development for Calverley Grounds, Tunbridge Wells

"ALL THREE SHOWED AN ABILITY TO HANDLE SCALE, UNDERSTAND SPACE AND ACHIEVE THE BRIEF IN A CLEAR AND CONCISE WAY"



ANSWER BACK! If you'd like to comment on any matter in the Professional Zone – email gdj@jppublishing.co.uk



LEFT Nick Morton's design for a farmhouse in the Cotswolds

BELOW Jon Sims' design of a sunken garden for a contemporary house

the barn into two studios for their work. Nick says: "My design is anchored around an intimate courtyard linking the farmhouse and converted barn/studios. It acts as the entrance from the avenue of apple trees and new parking to the west, and also the start of a vista that draws you up the hill towards a seating area and viewing pavilion. I wanted to reconnect the house with its landscape and create a juxtaposition of geometry and dreamy grasses."

JON SIMS

Last year's SGD Student Award winner was selected again by the judges, this time for his sunken garden for a contemporary house, complete with swimming pool terrace and outside dining area. Jon explains the effect the design would have on a visitor: "As you arrive, you are entranced by the simple beauty, punctuated by the fine architecture of the house. This is enough to silence you, but when you leave the car, you are stopped in your tracks by the view – not ahead, but downwards: a totally unexpected sunken garden."



NEW

SGD
2013
AWARDS

COME TO THE AWARDS

The winning student will be announced alongside the winners in all the SGD Award categories at the awards ceremony on Friday 24 January 2014. Tickets for the ceremony are now on sale from the SGD office – subject to availability.

www.sgdawards.com